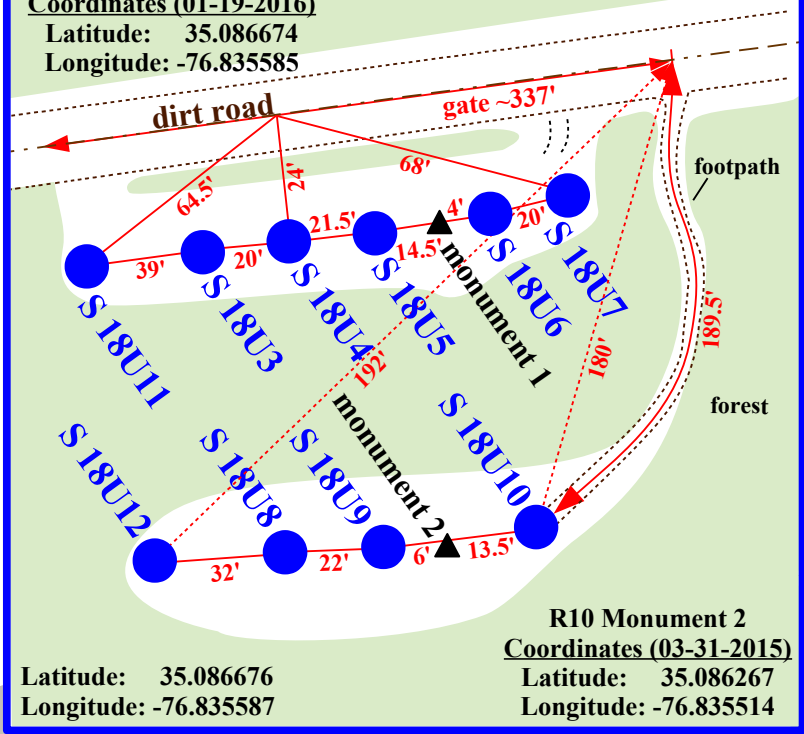


R10 Monument 1
Coordinates (01-19-2016)
Latitude: 35.086674
Longitude: -76.835585

Key required for gate



Site Map
North Carolina
Monitoring Well Network
Arapahoe Site, S 18U
North of Arapahoe, Pamlico County, NC

NOTE: This map is for informational purposes only. It does not authorize any party to enter onto any lands depicted herein.



Grantsboro ~ 7.5 miles

NC Hwy 306

gate
134.5'

Arapahoe ~ 4.3 miles

**Arapahoe
Monitoring
Station
(10 wells)**

500 ft